



**RED 5** Limited

ASX Code: RED

**September 2023 Quarterly Results**  
Mark Williams (MD), Patrick Duffy (Corp Dev)  
Richard Hay (COO), Mat Collings (Corp Dev)  
18 October 2023





## Competent Person Statements for JORC 2012 Mineral Resource and Ore Reserves

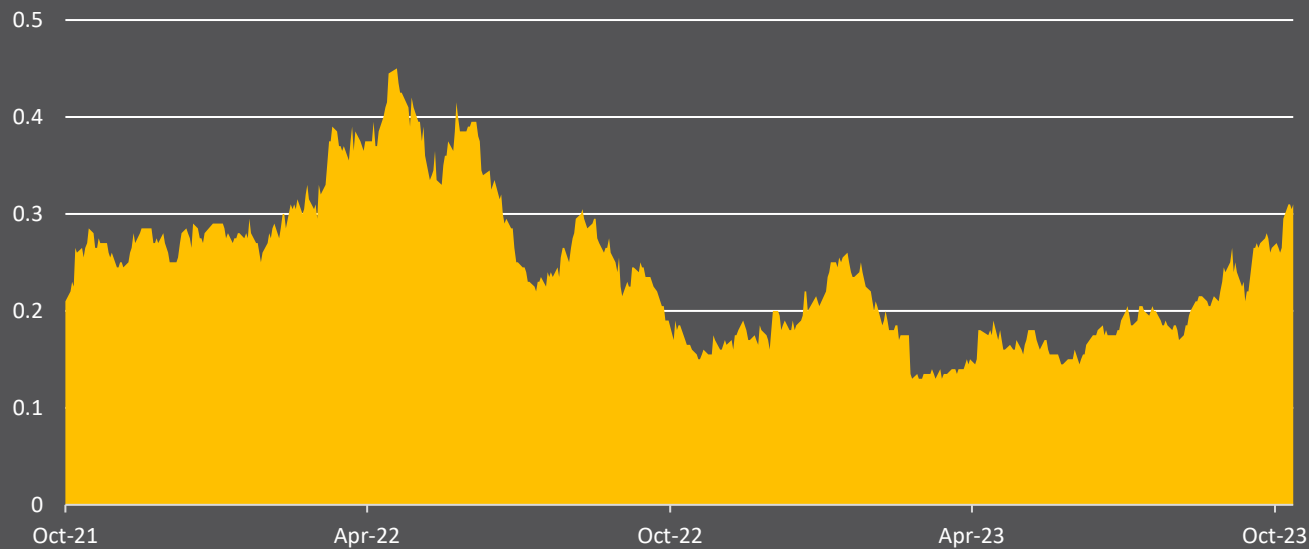
- The information in this presentation that relates to the Mineral Resources for the King of the Hills deposit is extracted from the ASX announcement titled “Mineral Resource and Ore Reserve Update 30 June 2023” released on 7 September 2023. The information in this presentation relating to the King of the Hills regional and satellite deposits is extracted from the ASX announcement titled “Mineral Resource and Ore Reserve Update 30 June 2023” released on 7 September 2023. The information in this presentation relating to the King of the Hills Ore Reserve is extracted from the ASX announcement titled “Mineral Resource and Ore Reserve Update 30 June 2023” released on 7 September 2023.
- The information in this presentation that relates to the Mineral Resources and Ore Reserves for the Darlot Underground deposit relates to the ASX announcement titled “Mineral Resource and Ore Reserve Update 30 June 2023” released on 7 September 2023, which are available on the ASX web-site. Information in this presentation relating to Cables and Mission are from ASX announcements: “Mineral Resource and Ore Reserve Update 30 June 2023” released on 7 September 2023. All announcements are available on the ASX web-site.
- Red 5 confirms that it is not aware of any new information or data that materially affects the information included in the original market announcements, and that all material assumptions and technical parameters underpinning the estimates in the relevant market announcements continue to apply and have not materially changed. The Company confirms that the form and context in which the Competent Persons findings are presented have not been materially modified from the original market announcements.

## Forward-Looking Statements

- Certain statements made during or in connection with this presentation contain or comprise certain forward-looking statements regarding RED's Mineral Resources and Reserves, exploration activities, project development operations, production rates, life of mine, projected cash flow, capital expenditure, operating costs and other economic performance and financial condition as well as general market outlook. Although RED believes that the expectations reflected in such forward-looking statements are reasonable, such expectations are only predictions and are subject to inherent risks and uncertainties which could cause actual values, results, performance or achievements to differ materially from those expressed, implied or projected in any forward-looking statements and no assurance can be given that such expectations will prove to have been correct. Accordingly, results could differ materially from those set out in the forward-looking statements as a result of, among other factors, changes in economic and market conditions, delays or changes in project development, success of business and operating initiatives, changes in the regulatory environment and other government actions, fluctuations in metals prices and exchange rates and business and operational risk management. Except for statutory liability which cannot be excluded, each of RED, its officers, employees and advisors expressly disclaim any responsibility for the accuracy or completeness of the material contained in this Investor Presentation and excludes all liability whatsoever (including in negligence) for any loss or damage which may be suffered by any person as a consequence of any information in this presentation or any error or omission. RED undertakes no obligation to update publicly or release any revisions to these forward-looking statements to reflect events or circumstances after today's date or to reflect the occurrence of unanticipated events other than required by the Corporations Act and ASX Listing Rules. Accordingly, you should not place undue reliance on any forward-looking statement.

## Authorisation

- This presentation has been authorised for release by the Board.



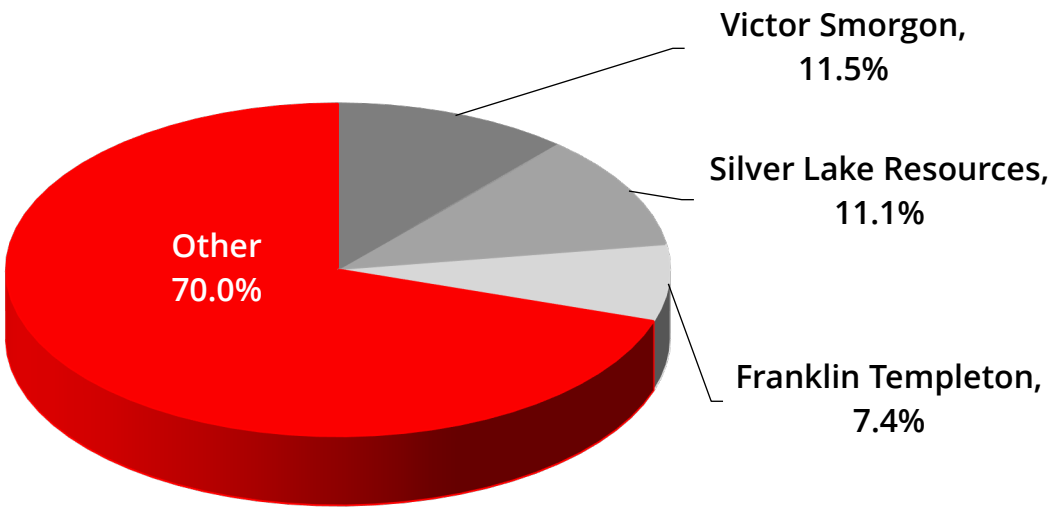
|  |           |
|--|-----------|
| Share price at 12 Oct 2023                       | A\$0.31   |
| Shares issued at 12 Oct 2023                     | 3,462M    |
| Market capitalisation at 12 Oct 2023             | A\$1,073M |
| Cash & bullion at 30 September 2023 <sup>1</sup> | A\$45M    |
| Debt at 30 September 2023 <sup>1</sup>           | A\$113M   |
| Enterprise value at 12 Oct 2023                  | A\$1,141M |

1. Unaudited as at 30 September 23.

## Our Company Vision

*“To be a successful multi-operational exploration and mining company, providing benefits to all stakeholders, through the consistent application of technical excellence, and responsible and sustainable industry practices.”*

## Shareholders



# Leadership Team with strong mining expertise



*Red 5 has a strong and capable Board and Executive team with many years of mining and development experience.*

*Following the two retirements at the Nov-23 AGM, the Red 5 Board will have five Directors, which the Board believe represents a good fit for the Company given its current size and status. This concludes the Board renewal process.*

## Board

### Russell Clark Chair

Appointed Chair in Jul-2023. Mining Engineer with >40 yrs experience at Newmont, Grange Resources and Normandy Mining. Chair of CZR Resources and Pearl Gull Iron, NED of Tungsten Mining.

### Andrea Sutton Non-executive Director

Chemical Engineer with >25 yrs experience at Rio Tinto, including Chief Executive and MD at ERA. Director since Nov-2020.

### Ian Macpherson Non-executive Director

Chartered Accountant with >30 yrs in the professional services industry. Specialist in capital structuring, equity and debt raising. Director since 2014.

### Peter Johnston Non-executive Director

Appointed Director in Jul-2023. Global mining executive with > 35 yrs experience at Glencore, Minara Resources and WMC. Former Chair of Minerals Council of Australia.

### Colin Loosemore Non-executive Director (retiring Nov 2023)

Geologist with >40 yrs international experience. Experienced MD for several mining companies. Director since 2014.

### Steven Tombs Non-executive Director (retiring Nov 2023)

Mining Engineer with >40 yrs international experience with major mining companies. Director since 2018.

## Management team

### Mark Williams Managing Director & CEO

Mining Engineer with prior experience at Orica and Xstrata, including General Manager of US\$6bn Tampakan Copper Gold Project. MD since 2014.

### Richard Hay Chief Operating Officer

Geologist with 30+ years of executive and operations experience at Barrick Gold, Evolution Mining, and Gascoyne Resources.

### Patrick Duffy Chief Corporate Development Officer

Chartered Accountant with prior experience at Glencore and Xstrata, including Director Strategy & Performance of US\$7bn Koniambo Project and CFO of US\$6bn Tampakan Project.

### Byron Dumpleton Chief Geologist

Geologist with 30+ years of international experience. Prior experience at KCGM, WMC and Straits Resources.

### David Coyne Chief Financial Officer

Chartered Accountant with 30+ years of senior executive experience at Spartan Resources (formerly Gascoyne), Peninsula Energy and Macmahon Holdings.

### Lisa Wynne Company Secretary

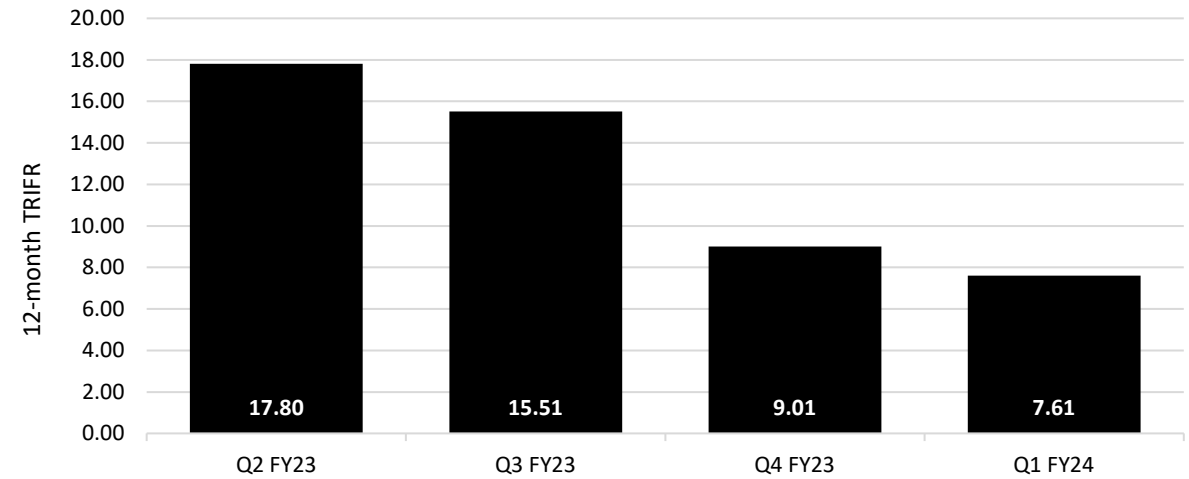
Chartered Accountant with >15 years experience in Company Secretary and Chief Financial Officer roles for listed companies and not-for-profits.

# Sept 2023 Quarter highlights

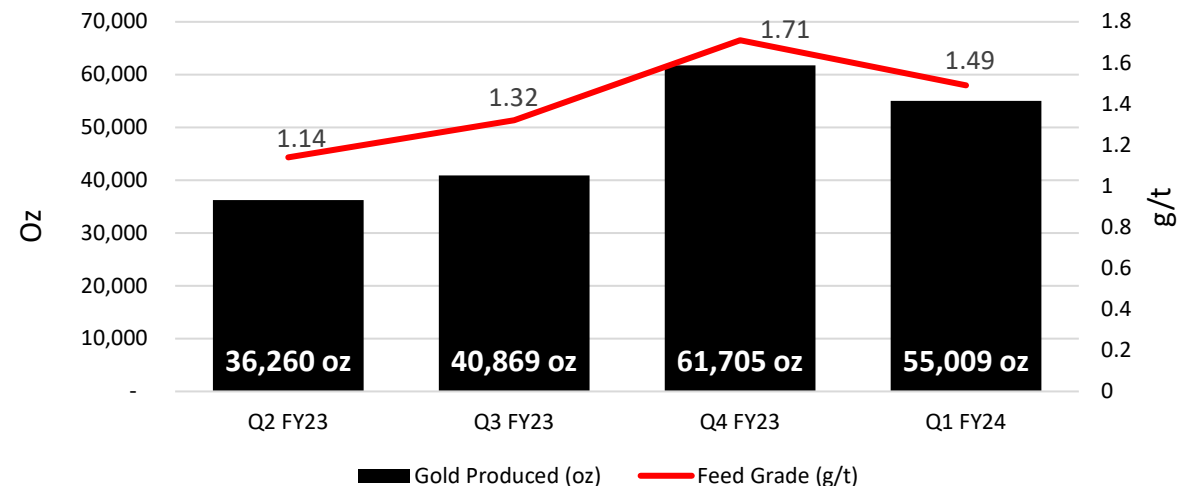


- One recordable injury for the quarter
  - Continued safety improvement, with 12-month TRIFR reducing to 7.6 (June Quarter: 9.0)
- 55,009 oz of gold produced for Sept Quarter
  - Sept Quarter AISC of \$1,696/oz and AIC of \$2,009/oz
- \$44.6m cash and bullion on hand (30 Sept)
  - Net debt position reduced by \$13.7m in Quarter
  - \$15.0m of Bank Debt repaid during Quarter, with \$112.8m outstanding at 30 Sept
- **Well positioned to deliver at the top end of FY24 production guidance:**
  - Production guidance of 195,000 – 215,000oz
  - AISC and growth capital guidance maintained at A\$1,850 - A\$2,100/oz and \$40m-\$46m

## Quarterly 12-month TRIFR



## Quarterly KOTH gold production and feed grade

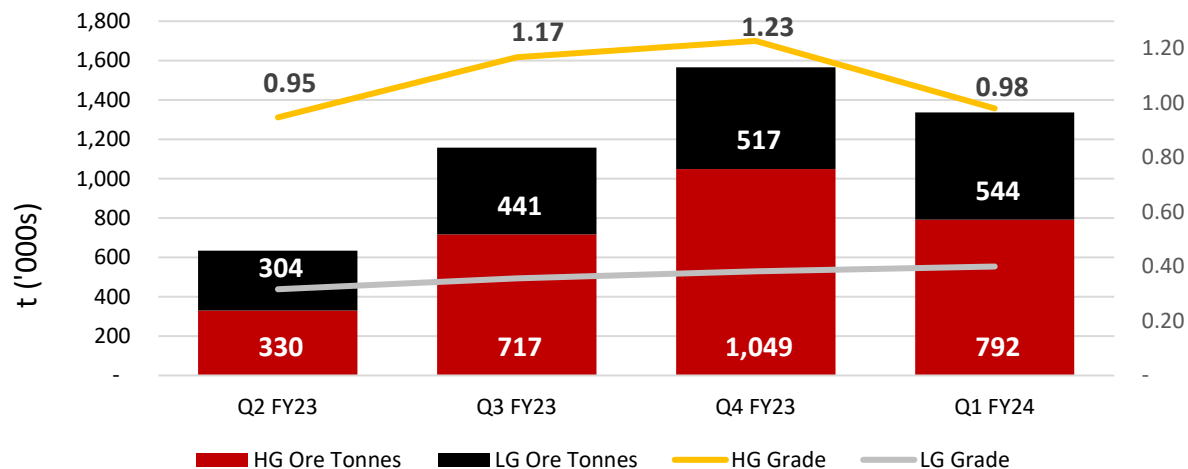


# Mining performance for Sept 2023 Quarter

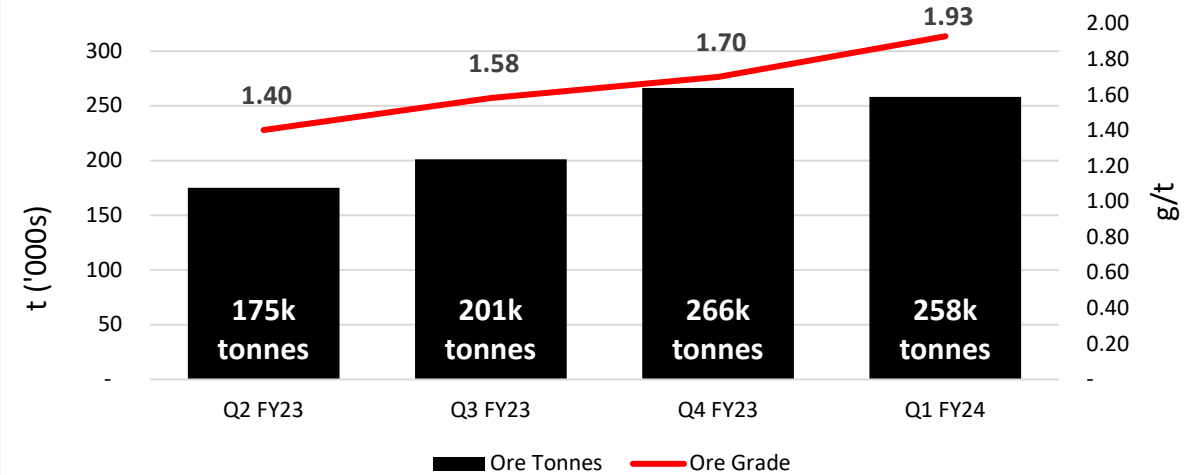


- All three mines are performing well, with operating cash flows of \$44.8m for the Quarter
- KOTH open pit HG ore reduced whilst management focused on setting up the pit for improved efficiencies
- KOTH underground continues to perform well with grades exceeding forecast

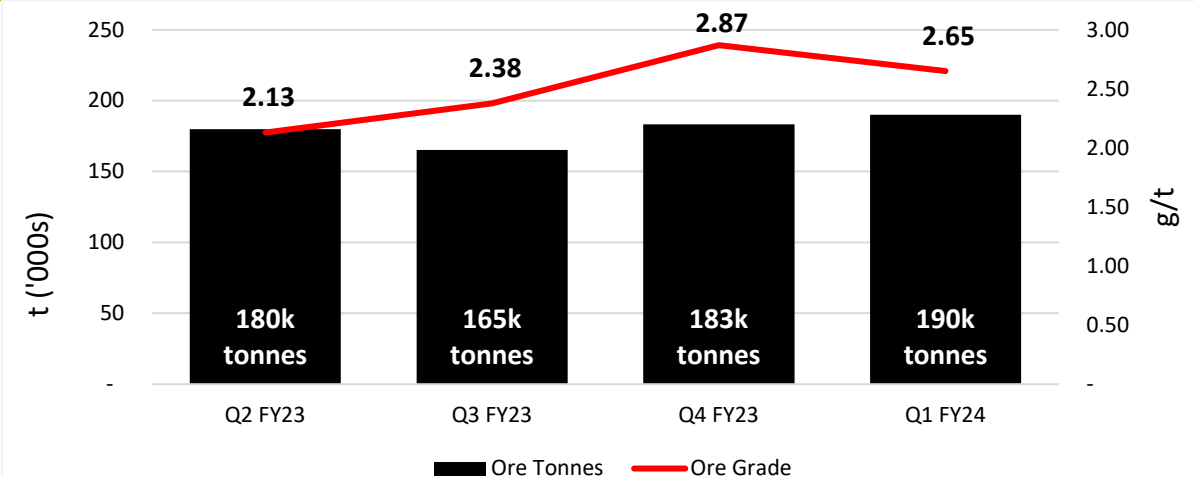
## Quarterly KOTH open pit performance



## Quarterly KOTH underground performance



## Quarterly Darlot underground performance

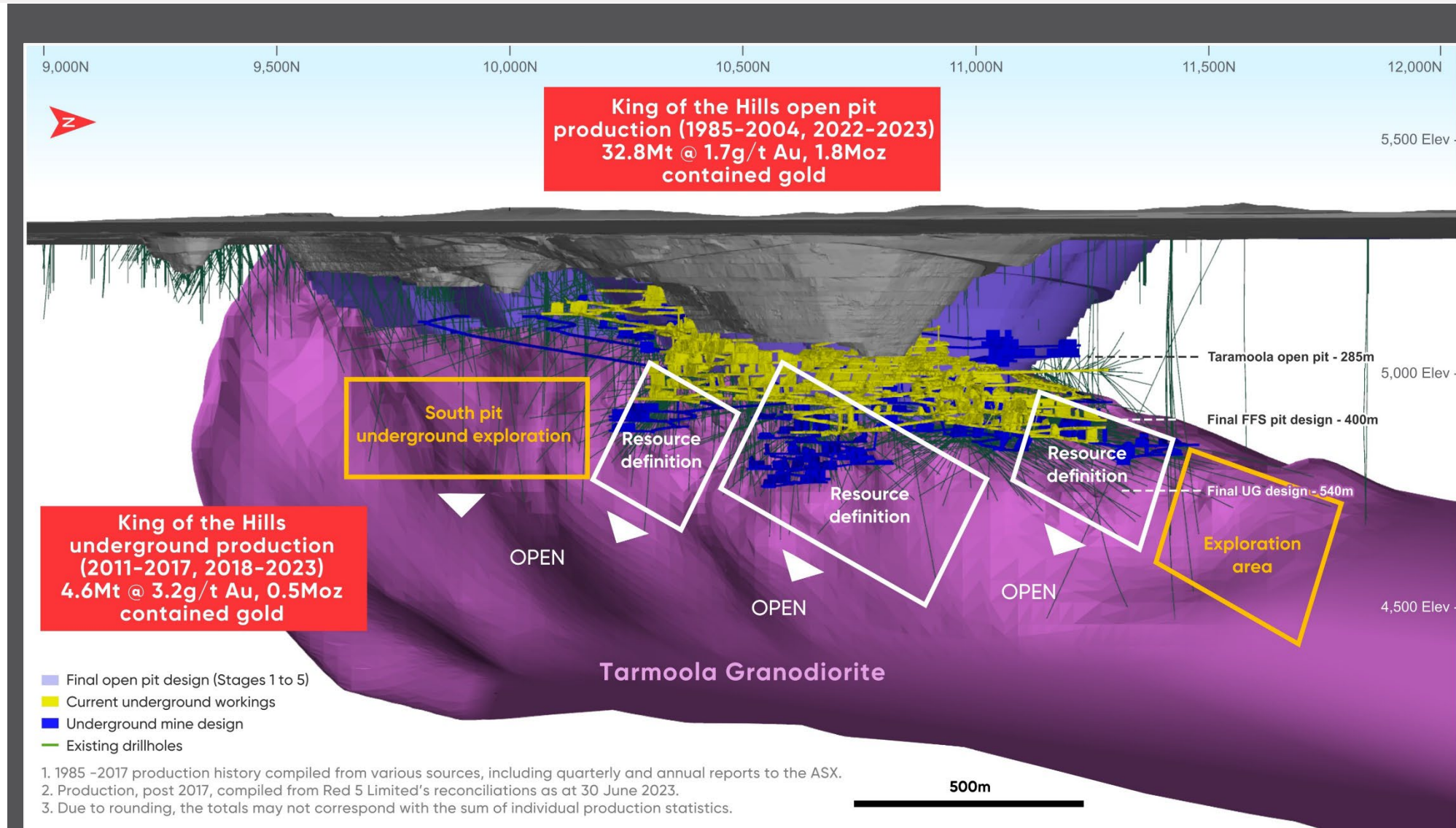




# Growth potential for KOTH mine<sup>1</sup>



- Resource definition and grade control drilling continues to deliver high-grade assays
  - 26.0m at 168.15g/t**
  - 16.5m at 16.50g/t**
  - 16.4m at 10.62g/t**
  - 29.5m at 5.11g/t**
  - 75.4m at 1.83g/t**
- Grade control drilling now complete for over 85% of the FY24 mine plan
- Potential to extend along the Regal and Eastern Flanks



1. Red 5 ASX Release: 8 August 2023

# Financial position at 30 Sept 2023



- Net debt position improved by \$13.7m during the Quarter to \$68.2m at 30 Sept 2023
  - *Cash and bullion of \$44.6m*
  - *Bank Debt outstanding of \$112.8m, after \$15.0m repaid in June Quarter*
  - *\$15.0m loan repayment includes \$10.4m of accelerated repayments*
- Operating cash flow for quarter of \$44.8m
  - *Trade creditors remained within normal terms during the quarter and as at 30 Sept 2023*
- Significantly improved balance sheet provides strong platform for remainder of FY24
  - *Prioritising excess cash flow in FY24 to accelerate pay down of debt facility*
  - *Anticipate refinancing debt facility in CY24*

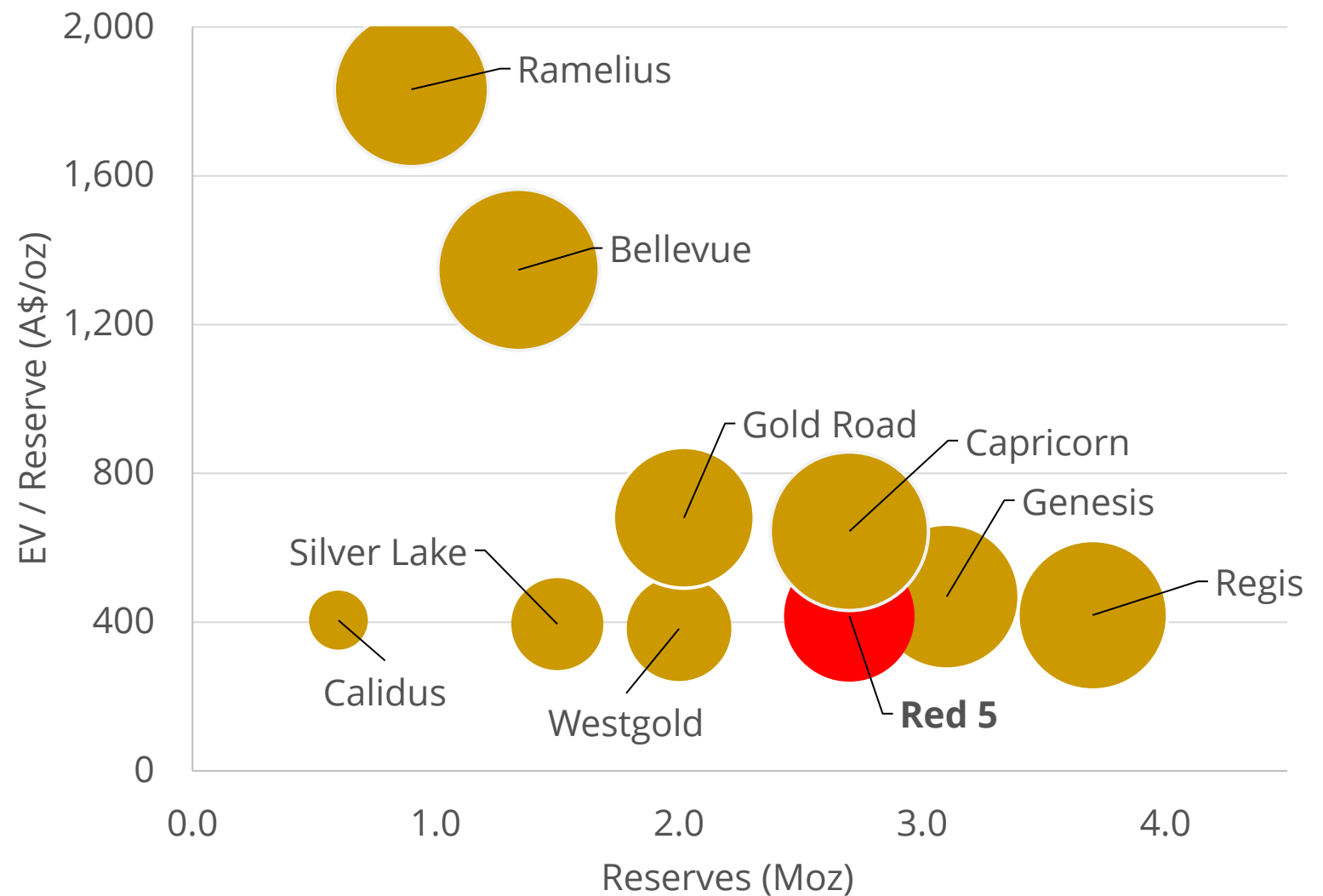
| <b>Cash and Bullion Reconciliation</b>               | <b>A\$m</b>   |
|--|---------------|
| <b>Cash and bullion – 30 June 2023</b>               | <b>45.9</b>   |
| Sales receipts net of hedging                        | 147.1         |
| Operating cost payments including royalties          | (98.6)        |
| Movement in bullion account                          | (3.7)         |
| <b>Cash flow from operations</b>                     | <b>44.8</b>   |
| Sustaining capital and mine development expenditure  | (4.4)         |
| Growth and exploration activities                    | (17.4)        |
| <b>Net cash (outflows) from investing activities</b> | <b>(21.8)</b> |
| Lease liabilities                                    | (6.5)         |
| Debt principal repayment                             | (15.0)        |
| Interest and bank fees                               | (2.8)         |
| <b>Net cash (outflows) from financing activities</b> | <b>(24.3)</b> |
| <b>Total cash and bullion increase/(decrease)</b>    | <b>(1.3)</b>  |
| <b>Cash and bullion – 30 Sept 2023</b>               | <b>44.6</b>   |



# Standout value opportunity with steady-state operations



- Red 5 EV/Reserve relative to its peers
- Valuation of WA based-gold companies<sup>1</sup>
- Bubble size = Enterprise Value
- The new KOTH Gold Mine positions Red 5 as an emerging mid-tier Australian gold producer



Sources:  
1. S&P Capital IQ ; Goldnerds.com.au as 9 October 2023





ASX Code: RED

**RED**<sup>5</sup> Limited

**THANK YOU**



Level 2, 35 Ventnor Avenue, West Perth, Western Australia  
6005 Australia



(61-8) 9322 4455



(61-8) 9481 5950







# Appendices



# Red 5 asset overview



Red 5's assets comprise the King of the Hills (KOTH) Gold Mine, Darlot Gold Mine and a 3.25% net smelter royalty over the Siana Gold Mine

## KOTH Summary

|  |         |                                    |              |
|--|---------|------------------------------------|--------------|
| Mineral Resource <sup>5</sup>          | 4.5Moz  | 2H FY2023 Production <sup>6</sup>  | 103koz       |
| Ore Reserve <sup>5</sup>               | 2.5Moz  | Indicative Production <sup>2</sup> | >200koz p.a. |
| Processing Plant Capacity <sup>1</sup> | 5.5Mtpa | Mine Life (LOM) <sup>5</sup>       | ~14 years    |

1: Processing plant has recently been operating at run-rate capacity of 5.5Mtpa, above the design capacity of 4.0Mtpa (Red 5 ASX Release: 15 September 2020).

2: Indicative production is based on the guidance range of 195koz to 215koz for FY2024.

## Darlot Summary

|                               |        |                                   |         |
|-------------------------------|--------|-----------------------------------|---------|
| Mineral Resource <sup>5</sup> | 1.8Moz | Plant capacity (C&M) <sup>3</sup> | 1.0Mtpa |
| Ore Reserve <sup>5</sup>      | 114koz |                                   |         |

3. The Darlot processing plant went into care and maintenance on 28 July 2022. Darlot UG continues to be mined and trucked to KOTH.

## Royalty from the Siana Gold Mine<sup>4</sup>

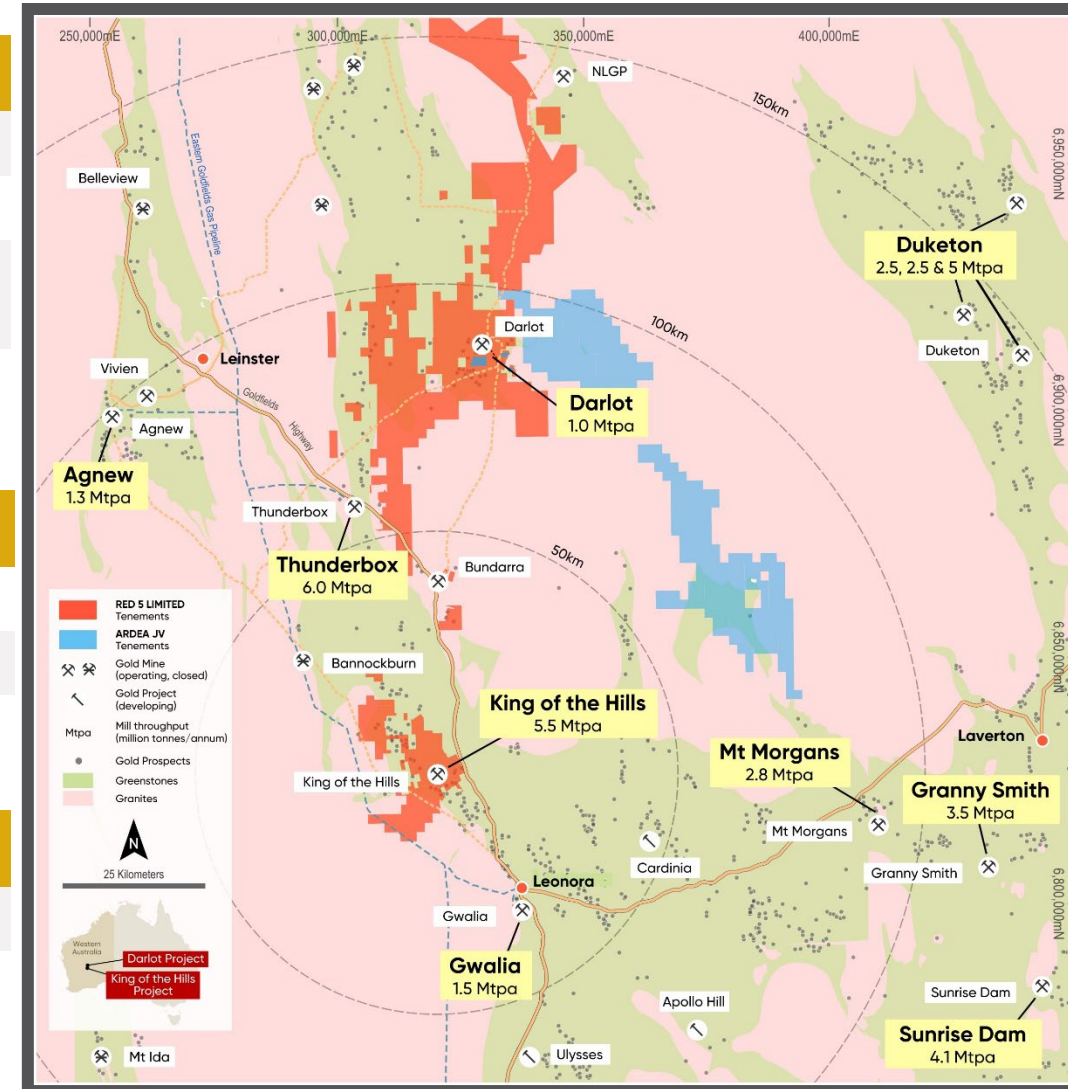
|                    |  |
|--------------------|--|
| Terms <sup>7</sup> | 3.25% net smelter royalty payable for up to 619koz of gold |
|--------------------|--|

4: The Siana Gold Mine has recently restarted production under its new owners.

5. Red 5 ASX Release: 7 September 2023

7. Red 5 ASX Releases: 21 September 2021

6. Red 5 ASX Release: 5 July 2023



# KOTH geology is well understood - open in all directions



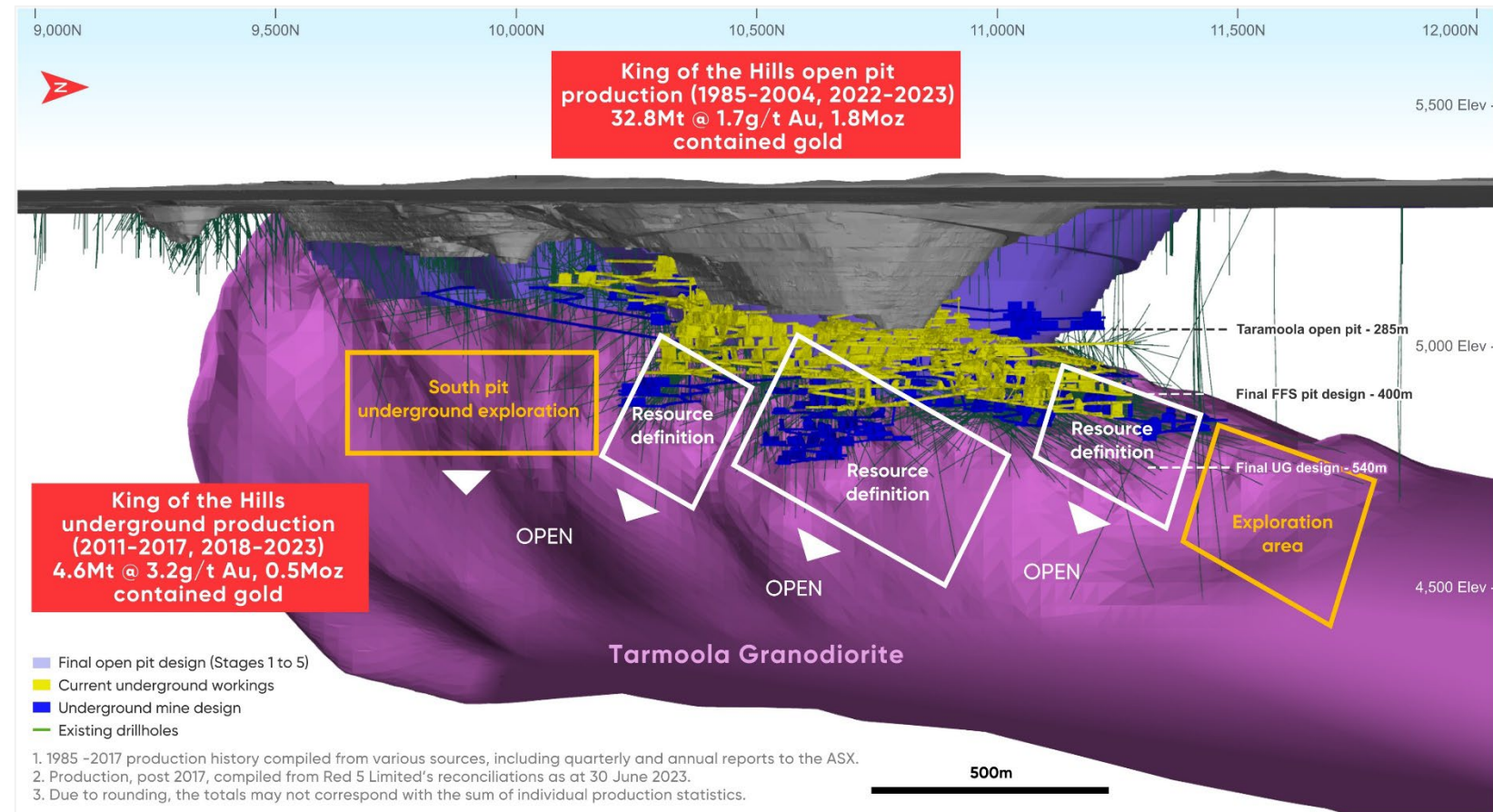
## Jun-23 Mineral Resource<sup>1</sup>

96.5Mt @ 1.4 g/t for  
4.5Moz Au

## Jun-23 Ore Reserve<sup>1</sup>

69.5Mt @ 1.1 g/t for  
2.5Moz Au

- Orebody in the contact zone of a substantial Granodiorite intrusion
  - 4km long x 2km wide
- Historical understanding from previous OP and UG mining
- Orebody remains open at depth and along strike
- South pit underground exploration outlines growth pathway



1. Red 5 ASX Release: 7 September 2023



# KOTH Mineral Resource of 4.5Moz<sup>1</sup>



## Total Open Pit & Underground KOTH Resource as at June 2023

| Classification  | Cut-off (g/t)  | Mining Method | Tonnes (000t) | Gold (g/t) | Contained Gold (000oz) |
|---|----------------|---------------|---------------|------------|------------------------|
| Measured  | 0.4-1.0        | OP+UG         | 4,092         | 1.1        | 145                    |
| Indicated   | 0.4-1.0        | OP+UG         | 67,559        | 1.5        | 3,286                  |
| Inferred  | 0.4-1.0        | OP+UG         | 13,630        | 1.5        | 657                    |
| <b>Total</b>  | <b>0.4-1.0</b> | <b>OP+UG</b>  | <b>85,282</b> | <b>1.5</b> | <b>4,087</b>           |
| <b>KOTH JORC 2012 All material within A\$2,700 Pit Shell</b>  |                |               |               |            |                        |
| Measured  | 0.4            | OP            | 4,056         | 1.1        | 142                    |
| Indicated   | 0.4            | OP            | 55,658        | 1.3        | 2,375                  |
| Inferred  | 0.4            | OP            | 9,009         | 1.2        | 359                    |
| <b>Total</b>  | <b>0.4</b>     | <b>OP</b>     | <b>68,722</b> | <b>1.3</b> | <b>2,876</b>           |
| <b>KOTH JORC 2012 All material outside A\$2,700 Pit Shell</b> |                |               |               |            |                        |
| Measured  | 1.0            | UG            | 37            | 2.3        | 3                      |
| Indicated   | 1.0            | UG            | 11,901        | 2.4        | 911                    |
| Inferred  | 1.0            | UG            | 4,622         | 2.0        | 297                    |
| <b>Total</b>  | <b>1.0</b>     | <b>UG</b>     | <b>16,560</b> | <b>2.3</b> | <b>1,211</b>           |



1. Red 5 ASX Release: 7 September 2023. Total Mineral Resource of 4.5Moz includes KOTH satellite pits and stockpiles.



# KOTH Ore Reserve of 2.5Moz<sup>1</sup>



## Total KOTH Ore Reserves as at June 2023

| Deposit           | Mining Method | Cut-off (g/t) | JORC 2012 Classification | Tonnes (Mt) | Gold (g/t) | Contained Gold (Moz) <sup>2</sup> |
|-------------------|---------------|---------------|--------------------------|-------------|------------|-----------------------------------|
| KOTH              | Open pit      | 0.4           | Proved                   | 4.6         | 0.8        | 0.1                               |
| KOTH              | Open pit      | 0.4           | Probable                 | 54.2        | 1.2        | 2.0                               |
| KOTH              | Underground   | 1.4           | Probable                 | 2.5         | 1.8        | 0.1                               |
| Rainbow           | Open pit      | 0.3           | Probable                 | 2.1         | 0.8        | 0.05                              |
| Centauri          | Open pit      | 0.3           | Probable                 | 0.3         | 1.2        | 0.01                              |
| Cerebus & Eclipse | Open pit      | 0.3           | Probable                 | 1.5         | 1.0        | 0.05                              |
| Total             |               |               |                          | 65.2        | 1.2        | 2.4                               |



1. Red 5 ASX Release: 7 September 2023. Total Reserve of 2.5Moz includes broken stockpiles. 2. Totals may not balance due to rounding.

# Top 20 Gold Deposits in Australia



| Resources                      |      |     |      | Reserves                       |      |     |      |
|--------------------------------|------|-----|------|--------------------------------|------|-----|------|
|                                | Mt   | g/t | Moz  |                                | Mt   | g/t | Moz  |
| Cadia                          | 3374 | 0.4 | 46.6 | Cadia                          | 1280 | 0.4 | 17.4 |
| Golden Mile – KCGM             | 565  | 1.6 | 28.3 | KCGM (100%)                    | 286  | 1.3 | 12.2 |
| Boddington                     | 788  | 0.6 | 15.2 | Boddington                     | 525  | 0.6 | 10.6 |
| Mallina Gold Project           | 278  | 1.3 | 11.7 | Mallina Gold Project           | 121  | 1.5 | 6.0  |
| Tanami                         | 86   | 3.6 | 9.8  | Tanami                         | 33   | 5.4 | 5.7  |
| Lake Cowal                     | 273  | 1.0 | 8.8  | Lake Cowal                     | 130  | 1.0 | 4.3  |
| Gruyere 100%                   | 153  | 1.4 | 6.7  | Gruyere 100%                   | 99   | 1.3 | 4.0  |
| Tropicana                      | 107  | 1.8 | 6.3  | St Ives                        | 25   | 3.4 | 2.7  |
| Gwalia                         | 35   | 5.0 | 5.7  | King of the Hills <sup>2</sup> | 69   | 1.1 | 2.5  |
| Sunrise Dam                    | 91   | 1.9 | 5.4  | Thunderbox Region              | 41   | 1.8 | 2.3  |
| Jundee                         | 60   | 2.8 | 5.4  | Granny Smith                   | 12   | 5.6 | 2.1  |
| Mungari                        | 98   | 1.7 | 5.3  | Gwalia                         | 13   | 5.1 | 2.1  |
| King of the Hills <sup>1</sup> | 97   | 1.4 | 4.5  | Tropicana                      | 37   | 1.8 | 2.1  |
| Thunderbox Region              | 80   | 1.7 | 4.4  | McPhilamys                     | 61   | 1.0 | 2.0  |
| Carosue Dam Region             | 63   | 2.1 | 4.2  | Fosterville                    | 7    | 8.0 | 1.7  |
| Telfer                         | 162  | 0.8 | 4.2  | Jundee                         | 13   | 3.6 | 1.5  |
| Granny Smith                   | 22   | 5.0 | 3.6  | Carosue Dam Region             | 25   | 1.8 | 1.5  |
| Fosterville                    | 15   | 5.7 | 2.8  | Mungari                        | 21   | 1.6 | 1.2  |
| McPhilamys                     | 80   | 1.0 | 2.7  | Sunrise Dam                    | 19   | 1.9 | 1.2  |
| Duketon Region                 | 65   | 1.2 | 2.5  | Agnew/EMU                      | 5    | 6.5 | 1.1  |

1. Red 5 ASX Release: 7 September 2023

2. Red 5's KOTH Project compared with Ore Reserves for the top 10 operating mines in Australia. Red 5 ASX Release: 7 September 2023

# Australian Top 20 Gold Deposits<sup>1</sup>



|  | Resources                 |      |      |          | Reserves |      |      |
|--|---------------------------|------|------|----------|----------|------|------|
|  | Mt                        | g/t  | Moz  |          | Mt       | g/t  | Moz  |
| <b>Cadia</b>   | Newcrest                  |      |      |          |          |      |      |
| Measured   | 32.0                      | 0.30 | 0.3  | Proven   |          |      |      |
| Indicated  | 2790.0                    | 0.47 | 41.8 | Probable | 1280.0   | 0.42 | 17.4 |
| Inferred   | 552.0                     | 0.26 | 4.6  |          |          |      |      |
| Total  | 3374.0                    | 0.43 | 46.6 | Total    | 1280.0   | 0.42 | 17.4 |
| <b>Telfer</b>  | Newcrest                  |      |      |          |          |      |      |
| Measured   | 3.3                       | 0.41 | 0.0  | Proven   |          |      |      |
| Indicated  | 138.3                     | 0.72 | 3.2  | Probable | 26.6     | 0.91 | 0.8  |
| Inferred   | 20.0                      | 1.41 | 0.9  |          |          |      |      |
| Total  | 161.6                     | 0.80 | 4.2  | Total    | 26.6     | 0.91 | 0.8  |
| Source: Newcrest Resource & Reserve release 11 Aug 2023 - Data as at 30 June 2023          |                           |      |      |          |          |      |      |
| <b>Haverton</b>  | Newcrest                  |      |      |          |          |      |      |
| Measured   | 0.0                       | 0.00 | 0.0  | Proven   | 0.0      | 0.00 | 0.0  |
| Indicated  | 40.0                      | 3.20 | 4.1  | Probable | 20.0     | 3.70 | 2.3  |
| Inferred   | 81.4                      | 1.40 | 3.7  |          |          |      |      |
| Total  | 121.4                     | 2.01 | 7.9  | Total    | 20.0     | 3.55 | 2.3  |
| Source: Newcrest Resource & Reserve release 11 Aug 2023 - Data as at 30 June 2023          |                           |      |      |          |          |      |      |
| <b>Boddington</b>  | Newmont                   |      |      |          |          |      |      |
| Measured   | 332.2                     | 0.64 | 6.9  | Proven   | 239.4    | 0.7  | 5.2  |
| Indicated  | 452.9                     | 0.57 | 8.3  | Probable | 285.5    | 0.6  | 5.4  |
| Inferred   | 2.8                       | 0.5  | 0.1  |          |          |      |      |
| Total  | 787.9                     | 0.60 | 15.2 | Total    | 524.9    | 0.63 | 10.6 |
| Source: Newmont Resource & Reserve Supplement 2022 - Data as at 31 Dec 2022                |                           |      |      |          |          |      |      |
| <b>KCGM (100%)</b>   | Northern Star             |      |      |          |          |      |      |
| Measured   | 119.8                     | 0.71 | 2.8  | Proven   | 119.8    | 0.70 | 2.8  |
| Indicated  | 283.5                     | 1.80 | 16.4 | Probable | 166.6    | 1.80 | 9.5  |
| Inferred   | 161.3                     | 1.77 | 9.2  |          |          |      |      |
| Total  | 564.7                     | 1.56 | 28.3 | Total    | 286.4    | 1.33 | 12.2 |
| Source: Northern Star Reserve and Resource Statement 4 May 2023 - Data as at 31 March 2023 |                           |      |      |          |          |      |      |
| <b>Tanami</b>  | Newmont                   |      |      |          |          |      |      |
| Measured   | 22.3                      | 3.51 | 2.5  | Proven   | 11.3     | 5.1  | 1.8  |
| Indicated  | 50.8                      | 3.48 | 5.7  | Probable | 21.6     | 5.5  | 3.8  |
| Inferred   | 13.0                      | 3.9  | 1.6  |          |          |      |      |
| Total  | 86.1                      | 3.55 | 9.8  | Total    | 32.9     | 5.35 | 5.7  |
| Source: Newmont Resource & Reserve Supplement 2022 - Data as at 31 Dec 2022                |                           |      |      |          |          |      |      |
| <b>Tropicana</b>   | AngloGold/Regis Resources |      |      |          |          |      |      |
| Measured   | 40.7                      | 1.40 | 1.8  | Proven   | 14.2     | 1.60 | 0.7  |
| Indicated  | 33.6                      | 1.80 | 2.0  | Probable | 22.5     | 1.90 | 1.4  |
| Inferred   | 32.9                      | 2.40 | 2.5  |          |          |      |      |
| Total  | 107.2                     | 1.83 | 6.3  | Total    | 36.7     | 1.78 | 2.1  |
| Source: Regis Resource and Reserve Statement 23 Feb 2023 - Data as at 31 Dec 2022          |                           |      |      |          |          |      |      |
| <b>Granny Smith</b>  | Goldfields                |      |      |          |          |      |      |
| Measured   | 2.5                       | 4.90 | 0.4  | Proven   | 1.8      | 5.60 | 0.3  |
| Indicated  | 10.7                      | 4.60 | 1.6  | Probable | 9.9      | 5.60 | 1.8  |
| Inferred   | 9.1                       | 5.50 | 1.6  |          |          |      |      |
| Total  | 22.3                      | 4.96 | 3.6  | Total    | 11.8     | 5.60 | 2.1  |
| Source: Goldfields 2022 Resource & Reserve Supplement - Data as at 31 Dec 2022             |                           |      |      |          |          |      |      |
| <b>Gruyere 100%</b>  | Goldfields/Gold Road      |      |      |          |          |      |      |
| Measured   | 20.0                      | 1.08 | 0.7  | Proven   | 19.8     | 1.06 | 0.7  |
| Indicated  | 103.3                     | 1.38 | 4.6  | Probable | 79.0     | 1.33 | 3.4  |
| Inferred   | 29.5                      | 1.48 | 1.4  |          |          |      |      |
| Total  | 152.7                     | 1.36 | 6.7  | Total    | 98.8     | 1.27 | 4.0  |
| Source: Gold Road 2022 Resource & Reserve Supplement - Data as at 31 Dec 2022              |                           |      |      |          |          |      |      |

|  | Resources     |      |      |          | Reserves |      |     |
|--|---------------|------|------|----------|----------|------|-----|
|  | Mt            | g/t  | Moz  |          | Mt       | g/t  | Moz |
| <b>St Ives</b>   | Goldfields    |      |      |          |          |      |     |
| Measured   | 0.9           | 3.30 | 0.1  | Proven   | 5.9      | 2.60 | 0.5 |
| Indicated  | 9.4           | 2.90 | 0.9  | Probable | 18.7     | 3.70 | 2.2 |
| Inferred   | 11.3          | 3.90 | 1.4  |          |          |      |     |
| Total  | 21.6          | 3.45 | 2.4  | Total    | 24.6     | 3.40 | 2.7 |
| Source: Goldfields 2022 Resource & Reserve Supplement - Data as at 31 Dec 2022             |               |      |      |          |          |      |     |
| <b>Agnew/EMU</b>   | Goldfields    |      |      |          |          |      |     |
| Measured   | 0.1           | 5.60 | 0.0  | Proven   | 0.0      | 8.20 | 0.0 |
| Indicated  | 5.3           | 5.00 | 0.9  | Probable | 5.3      | 6.50 | 1.1 |
| Inferred   | 4.0           | 4.70 | 0.6  |          |          |      |     |
| Total  | 9.5           | 4.87 | 1.5  | Total    | 5.3      | 6.46 | 1.1 |
| Source: Goldfields 2022 Resource & Reserve Supplement - Data as at 31 Dec 2022             |               |      |      |          |          |      |     |
| <b>Lake Cowal</b>  | Evolution     |      |      |          |          |      |     |
| Measured   | 29.5          | 0.5  | 0.4  | Proven   | 27.4     | 0.5  | 0.4 |
| Indicated  | 204.9         | 1.0  | 6.8  | Probable | 102.1    | 1.2  | 3.9 |
| Inferred   | 38.8          | 1.3  | 1.6  |          |          |      |     |
| Total  | 273.3         | 1.01 | 8.8  | Total    | 129.5    | 1.04 | 4.3 |
| <b>Mungari</b>   | Evolution     |      |      |          |          |      |     |
| Measured   | 1.4           | 4.7  | 0.2  | Proven   | 0.4      | 5.5  | 0.1 |
| Indicated  | 63.5          | 1.6  | 3.2  | Probable | 23.9     | 1.5  | 1.2 |
| Inferred   | 32.7          | 1.8  | 1.9  |          |          |      |     |
| Total  | 97.5          | 1.7  | 5.3  | Total    | 21.3     | 1.58 | 1.2 |
| Source: Evolution 2023 Resource & Reserve - Data as at 31 Dec 2022                         |               |      |      |          |          |      |     |
| <b>Duketon Region</b>  | Regis         |      |      |          |          |      |     |
| Measured   | 21.0          | 0.80 | 0.6  | Proven   | 12.0     | 0.60 | 0.2 |
| Indicated  | 32.0          | 1.20 | 1.3  | Probable | 14.0     | 1.60 | 0.7 |
| Inferred   | 12.0          | 1.60 | 0.6  |          |          |      |     |
| Total  | 65.0          | 1.20 | 2.5  | Total    | 26.0     | 1.10 | 1.0 |
| Source: Regis Resource & Reserve Statement 20 June 2023 - Data as at 31 Dec 2022           |               |      |      |          |          |      |     |
| <b>McPhlamys</b>   | Regis         |      |      |          |          |      |     |
| Measured   |               |      |      | Proven   |          |      |     |
| Indicated  | 77.0          | 1.10 | 2.6  | Probable | 61.0     | 1.03 | 2.0 |
| Inferred   | 3.0           | 0.80 | 0.1  |          |          |      |     |
| Total  | 80.0          | 1.05 | 2.7  | Total    | 61.0     | 1.03 | 2.0 |
| Source: Regis Resource & Reserve Statement 20 June 2023 - Data as at 31 Dec 2022           |               |      |      |          |          |      |     |
| <b>Carosue Dam Region</b>  | Northern Star |      |      |          |          |      |     |
| Measured   | 16.1          | 1.90 | 1.0  | Proven   | 12.6     | 1.80 | 0.7 |
| Indicated  | 30.3          | 2.10 | 2.1  | Probable | 12.2     | 1.90 | 0.7 |
| Inferred   | 16.9          | 2.20 | 1.0  |          |          |      |     |
| Total  | 63.3          | 2.10 | 4.2  | Total    | 24.9     | 1.85 | 1.5 |
| <b>Thunderbox Region</b>   | Northern Star |      |      |          |          |      |     |
| Measured   | 20.0          | 1.50 | 1.0  | Proven   | 12.2     | 1.50 | 0.6 |
| Indicated  | 49.8          | 1.80 | 2.9  | Probable | 29.0     | 1.80 | 1.7 |
| Inferred   | 9.9           | 1.60 | 0.5  |          |          |      |     |
| Total  | 79.7          | 1.72 | 4.4  | Total    | 41.2     | 1.75 | 2.3 |
| Source: Northern Star Reserve and Resource Statement 4 May 2023 - Data as at 31 March 2023 |               |      |      |          |          |      |     |
| <b>Mallina Gold Project</b>  | De Grey       |      |      |          |          |      |     |
| Measured   | 4.7           | 1.70 | 0.3  | Proven   | 0.0      | 0.00 | 0.0 |
| Indicated  | 184.1         | 1.30 | 7.8  | Probable | 120.8    | 1.55 | 6.0 |
| Inferred   | 89.2          | 1.30 | 3.7  |          |          |      |     |
| Total  | 278.0         | 1.30 | 11.7 | Total    | 120.8    | 1.55 | 6.0 |
| Source: De Grey Reserve and Resource release 15 June 2023 - Data as at September 2023      |               |      |      |          |          |      |     |

|  | Resources         |      |      |          | Reserves |       |     |
|--|-------------------|------|------|----------|----------|-------|-----|
|  | Mt                | g/t  | Moz  |          | Mt       | g/t   | Moz |
| <b>Sunrise Dam</b>   | AngloGold Ashanti |      |      |          |          |       |     |
| Measured   | 20.3              | 1.64 | 1.1  | Proven   | 12.0     | 1.50  | 0.6 |
| Indicated  | 26.1              | 1.59 | 1.3  | Probable | 6.6      | 2.71  | 0.6 |
| Inferred   | 44.6              | 2.11 | 3.0  |          |          |       |     |
| Total  | 91.1              | 1.86 | 5.4  | Total    | 18.6     | 1.94  | 1.2 |
| Source: AngloGold Resource & Reserve Supplement 2022 - Data as at 31 Dec 2022              |                   |      |      |          |          |       |     |
| <b>Gwalia</b>  | Genesis           |      |      |          |          |       |     |
| Measured   | 6.0               | 4.50 | 0.9  | Proven   | 1.5      | 7.30  | 0.4 |
| Indicated  | 26.4              | 4.99 | 4.2  | Probable | 11.3     | 4.80  | 1.8 |
| Inferred   | 3.1               | 6.16 | 0.6  |          |          |       |     |
| Total  | 35.5              | 5.01 | 5.7  | Total    | 12.9     | 5.10  | 2.1 |
| Source: Genesis Reserve & Resource Statement 3 July 2023                                   |                   |      |      |          |          |       |     |
| <b>Jundee</b>  |                   |      |      |          |          |       |     |
| Measured   | 2.4               | 1.20 | 0.1  | Proven   | 2.4      | 1.20  | 0.1 |
| Indicated  | 41.8              | 2.90 | 3.9  | Probable | 10.9     | 4.10  | 1.4 |
| Inferred   | 16.3              | 2.50 | 1.3  |          |          |       |     |
| Total  | 60.5              | 2.76 | 5.4  | Total    | 13.3     | 3.56  | 1.5 |
| Source: Northern Star Reserve and Resource Statement 4 May 2023 - Data as at 31 March 2023 |                   |      |      |          |          |       |     |
| <b>Kanowna</b>   |                   |      |      |          |          |       |     |
| Measured   | 5.9               | 3.30 | 0.6  | Proven   | 3.0      | 2.70  | 0.3 |
| Indicated  | 29.7              | 2.00 | 1.9  | Probable | 6.0      | 2.40  | 0.5 |
| Inferred   | 33.3              | 1.60 | 1.8  |          |          |       |     |
| Total  | 68.8              | 1.93 | 4.3  | Total    | 9.0      | 2.52  | 0.7 |
| Source: Northern Star Reserve and Resource Statement 4 May 2023 - Data as at 31 March 2023 |                   |      |      |          |          |       |     |
| <b>Big Bell</b>  | Westgold          |      |      |          |          |       |     |
| Measured   | 6.5               | 3.08 | 0.5  | Proven   | 3.6      | 2.85  | 0.3 |
| Indicated  | 9.9               | 3.23 | 1.0  | Probable | 6.3      | 3.31  | 0.7 |
| Inferred   | 8.9               | 2.73 | 0.8  |          |          |       |     |
| Total  | 24.4              | 3.01 | 2.4  | Total    | 9.8      | 3.14  | 1.0 |
| Source: Westgold Resource & Reserve Release 11 September 2023 - Data as at 30 Jun 2023     |                   |      |      |          |          |       |     |
| <b>Fosterville</b>   | Agnico Eagle      |      |      |          |          |       |     |
| Measured   | 1.1               | 3.67 | 0.1  | Proven   | 0.6      | 23.19 | 0.5 |
| Indicated  | 9.7               | 5.18 | 1.6  | Probable | 6.0      | 6.39  | 1.2 |
| Inferred   | 5.6               | 6.53 | 1.2  |          |          |       |     |
| Total  | 15.4              | 5.67 | 2.8  | Total    | 6.6      | 7.95  | 1.7 |
| Source: Agnico Eagle limited 31 December 2022  |                   |      |      |          |          |       |     |
| <b>King of the Hills</b>   | Red 5             |      |      |          |          |       |     |
| Measured   | 6.7               | 0.88 | 0.2  | Proven   | 7.2      | 0.80  | 0.2 |
| Indicated  | 74.7              | 1.48 | 3.6  | Probable | 62.3     | 1.20  | 2.3 |
| Inferred   | 15.2              | 1.48 | 0.7  |          |          |       |     |
| Total  | 96.5              | 1.44 | 4.46 | Total    | 69.5     | 1.10  | 2.5 |
| Source: Red 5 Resource and Reserve Statement, 7 Sept 2023, Resource update 30 June 2023    |                   |      |      |          |          |       |     |

1. Sources detailed in the table





ASX Code: RED

# RED 5 Limited

## THANK YOU



Level 2, 35 Ventnor Avenue, West Perth, Western Australia  
6005 Australia



(61-8) 9322 4455



(61-8) 9481 5950

